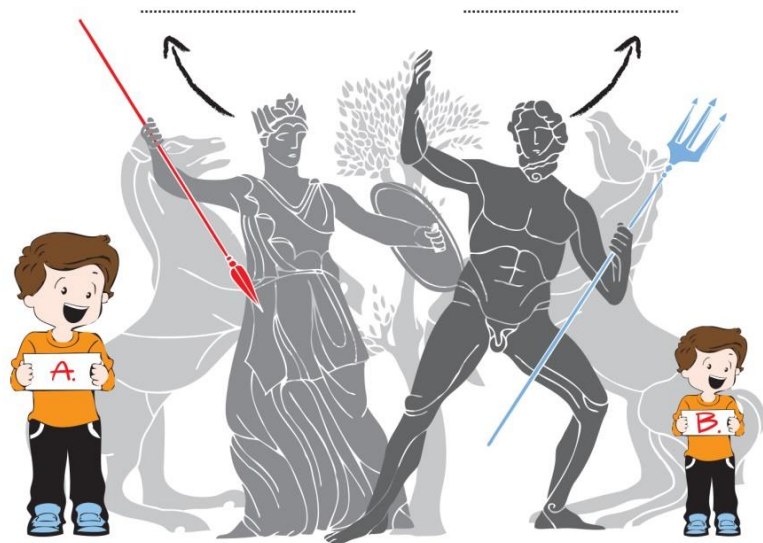


The Parthenon sculptures in the Acropolis Museum!

The West side: Can you work out which of the sculptures you see come from the **pediment**? Look at the figures in the center and write their names on the dotted line. Which story is presented here?

.....



Correct B: The central figures of the pediment are approximately 3.30 meters high.

Which of the two boys is shown at the correct height next to the drawing of the pediment figures? Consider that the boy is about 1.5 meters tall.

Unfortunately not all the sculptures of the pediment have survived.

Look at the sculptures in the exhibition. Some of them are original but others are copies because the originals are exhibited in museums abroad or remain on the monument.

Write down two features that make an original sculpture different from a copy.

1 2

Now come closer to this continuous carved band that is on the wall behind the metopes, the **Parthenon frieze**. Find the frieze-block shown below, and try to imagine what the figures are talking about.



The South side: Go to the south side of the frieze and look at the *metopes*.

The south side has the best preserved metopes with scenes of the *Centauromachy*, the Battle between the Centaurs (half men-half horses) and the Lapiths (people of Thessaly).

Look at the first metope that is temporarily displayed at a lower height than the other metopes.

Complete the scene as you imagine it to have been in ancient times.

Do you think it was coloured?



The East side: You've reached the other narrow side of the monument, the east side. Note the two corner sculptures of the *pediment*, the chariot of the Sun that 'rises' and that of Selene that 'sets'. What do they symbolise about the time that the Goddess Athena was born?

Was she born: at dawn *at midday* *in the evening*

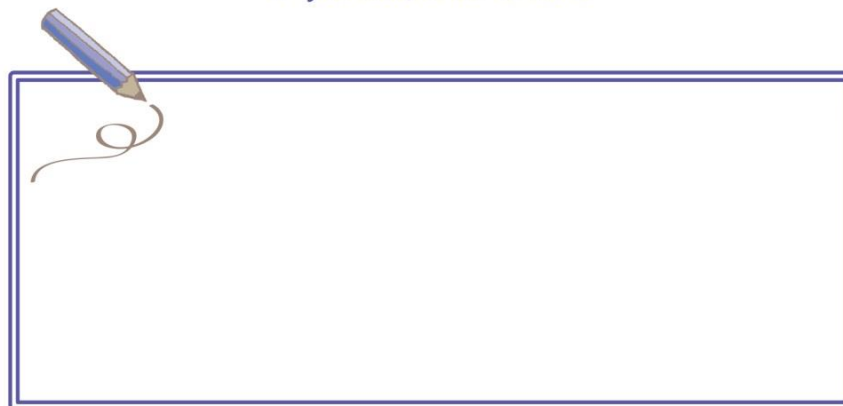
To the left and right of the central figures of the pediment, some of the Olympian Gods are presented.

Do you recognize them?

Now proceed behind the pediment towards the frieze and find the child and the 'official' that hold the gift for the Goddess Athena.

What is the gift?

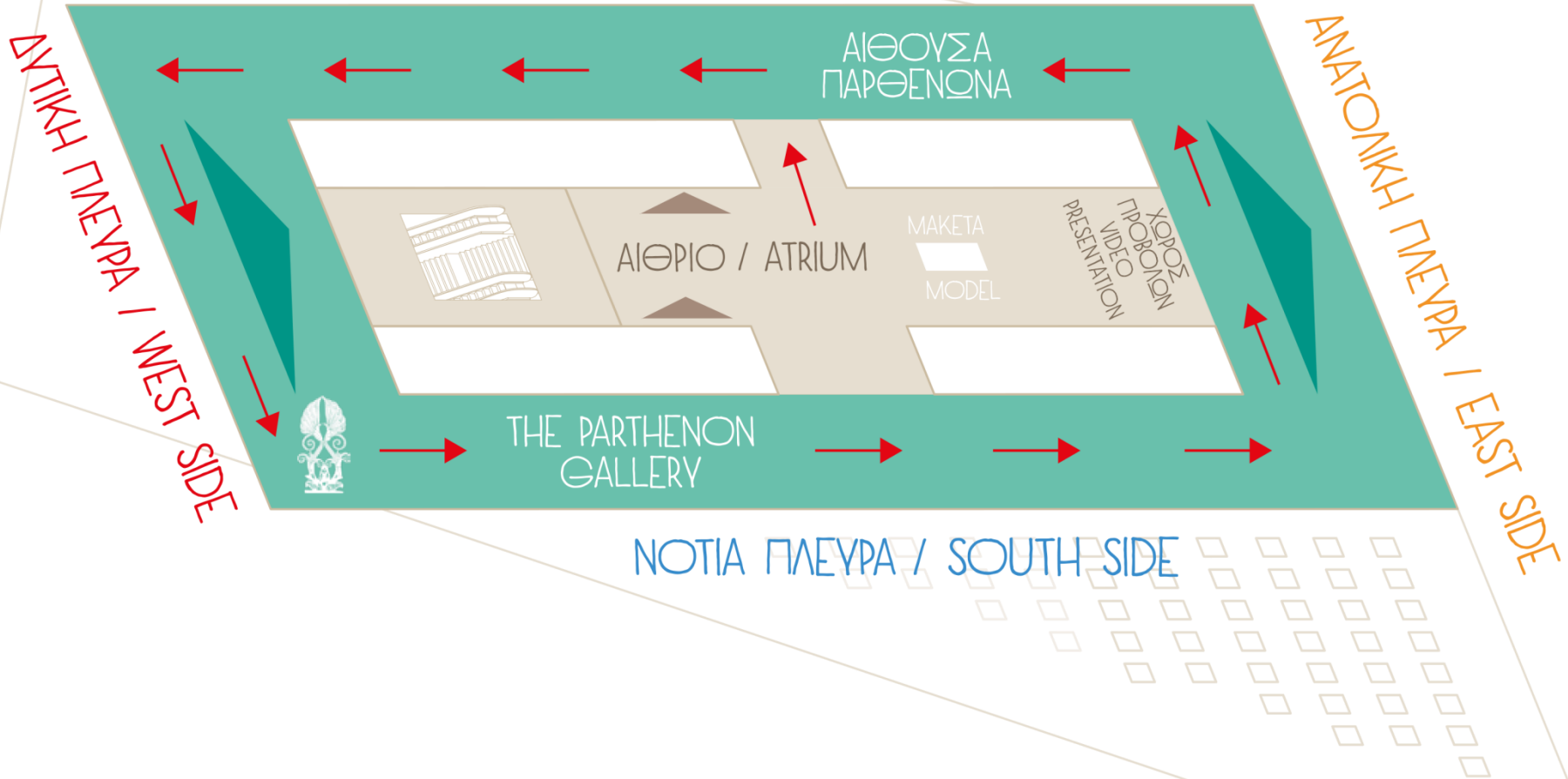
*What gift would you offer to the Goddess Athena?
If you like, draw it here!*



The North side: Proceed along the north *frieze*, and look carefully at the groups of figures. Write an when you find the following:

- four horses that draw a chariot*
- a group of elderly men*
- a musician playing a flute*
- a scared bull*
- a figure that has put down his *hydria* (a water jar) in order to rest*

ΒΟΡΕΙΑ ΠΛΕΥΡΑ / NORTH SIDE



ΕΠΙΠΕΔΟ 3 / LEVEL 3

THE PARTHENON



FRIEZE:

the continuous relief band that ran around the upper part of the main temple, the cella.

PEDIMENT:

the triangular area with sculptures, formed by the roof at each narrow side of the temple.

ARCHITRAVE:

part of the temple placed above the columns connecting them. It consists of three blocks placed parallel to each other.

CELLA:

the main temple, behind the colonnade, where the statue of the goddess Athena stood.

COLUMN:

each consists of a shaft and a capital. It is repeated in a row around the main temple.

AKROTHERION:

the sculpture in the shape of a flower that decorated the top of the pediments.

METOPE:

square block with relief decoration that alternates with triglyphs, above the architrave.

TRIGLYPH:

part of the temple, each with three vertical sections in relief. It alternates with the metopes, above the architrave.

DORIC COLUMN



IONIC COLUMN

